

# Community Health Needs Assessment 2019 Implementation Strategy

## Third Year Report Card

Measurable Objectives for Dauphin County	Baseline (7/1/16)	FY 17	FY 18	FY 19	Target - Top US Performers (6/30/2019)
<b>Access to Health Services</b>					
Percent of Adults 18-64 Without Medical Insurance	14%	11.2%	7.7%	8%	13%
Percent of Children Under Age 19 Without Medical Insurance	6%	4.5%	4.5%	4%	5%
Percent of Adults Who Report Poor or Fair Health	16%	14%	15%	15%	12%
<b>Behavioral Health</b>					
Average Number of Poor Mental Health Days Reported in the Past 30 Days	4	3.7	4.1	4.1	2.8
<b>Healthy Lifestyles</b>					
Percent of Adults Who are Obese (BMI of >=30)	31%	33%	31%	34%	29%
Percent of Adults Who are Current Smokers	19%	17%	17%	17%	15%
Percent of Adults Who Report No Leisure-Time Physical Activity	24%	23%	24%	23%	20%

Data Source: County Health Rankings (<http://www.countyhealthrankings.org>)

All objectives improved since baseline except "Average Number of Poor Mental Health Days Reported in the Past 30 Days" and "Percent of Adults Who are Obese (BMI of greater than or equal to 30)", but not all reached the target of "Top US Performers".

Several programs were offered to assist community members with navigating the healthcare system and connecting them to community resources, thus improving their health. Patient Navigation by Medical Students, Financial Counseling and Insurance Enrollment for all ages, Food Box Initiative, Volunteering at Free Community Clinics, Prescription Assistance Program, Drive Thru Flu Shots, Diabetes Adult Care and Community Paramedicine are just a few of these services.

- Diabetes Adult Care offered pre-diabetes classes and diabetes support groups to almost 200 participants last year and was able to increase the percentage of people who had better blood sugar control (A1C less than 9).
- Community Paramedicine is a non-emergency, free-to-participant initiative that utilizes paramedics to assist underserved community members with medical evaluations, health education and navigation of the healthcare system. The program has expanded to four full-time staff serving 800 participants last year and was successful at reducing hospital readmissions.

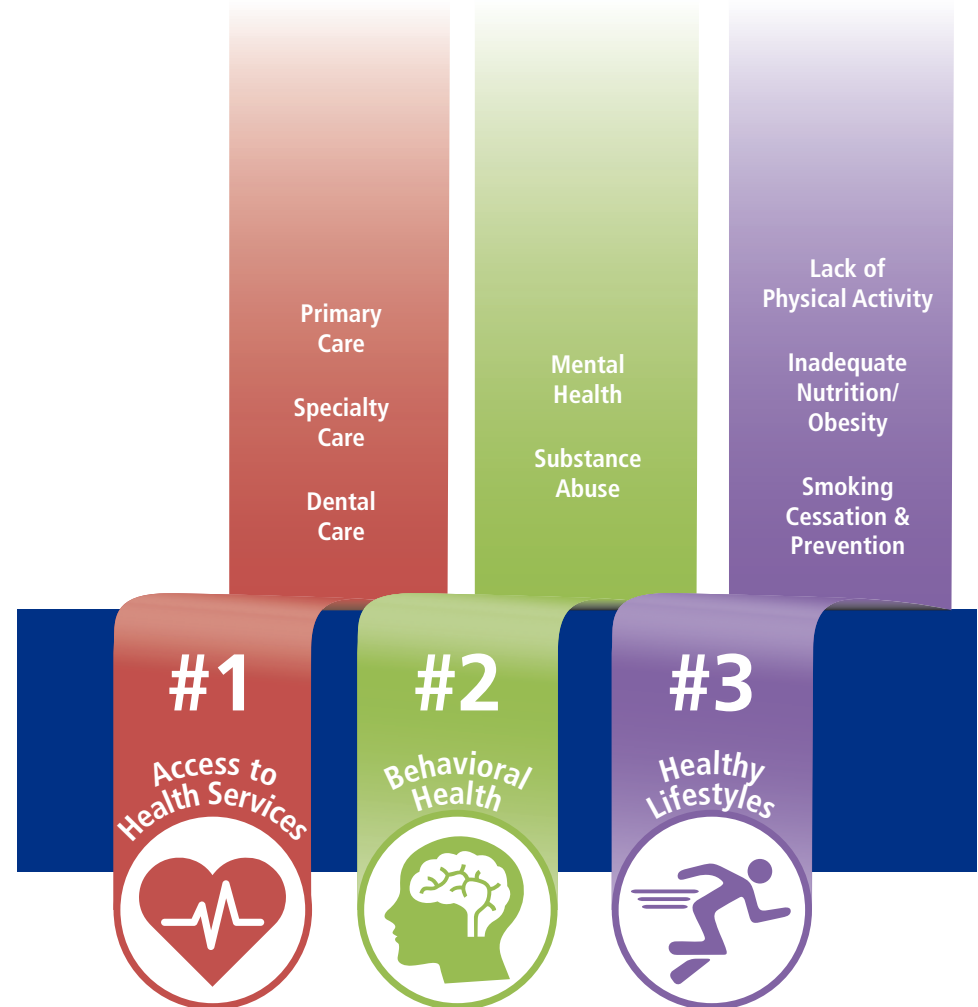
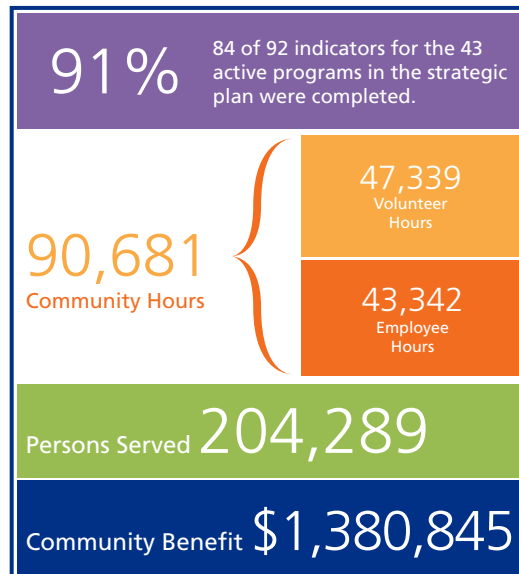
Mental Health, Nutrition, and Physical Activity will continue as top health concerns in Penn State Health's next Implementation Plan. Several initiatives will be implemented to address:

#### Behavioral Health

- Center for the Protection of Children
- Community Screenings, Programs, Training and Education
- Psychiatry Community Fellowship

#### Healthy Lifestyles

- Community Garden
- Farmers' Market
- Food Box Initiative
- Wellness on Wheels
- Standardized Nutrition Education Program
- Bike Share Program
- Walk Friendly Community Assessment



**Five South Central Pennsylvania Counties**  
Cumberland • Dauphin • Lebanon • Perry • York

# Community Health Needs Assessment

## 2019 Implementation Strategy

### Third Year Report Card



Program Title	Employee Hours	Volunteer Hours	Community Benefit (\$)	Persons Served
<b>Access to Health Services</b>				
Alder Health Services	74	0	4,230	3,850
CHIP Awareness and Enrollment	2,496	0	123,263	8
Community Check-Up Center	816	0	101,365	1,283
Dental Services	3	0	504	1
Dermatology TeleHealth	156	0	11,018	69
Diabetes Adult Care	63	0	3,090	192
Diversity Education and Cultural Competency	23	48	0	345
Financial Counseling and Insurance Enrollment	23	0	1,138	170
Healthy Woman Free Mammogram Program	6	0	653	30
Heart and Vascular Health for Adults	41	65	2,505	136
Heart Health for Children	1,382	200	96,245	7,225
Home Visits to High Risk Populations now Paramedicine	8,320	0	233,680	800
Hope Within Ministries	0	0	2,530	3
Influenza Vaccine Administration	1,205	742	55,512	5,693
LionCare at Bethesda Mission	551	1,316	68,722	1,324
Nepalese and Bhutanese Populations	110	39	13,757	234
Pediatric Trauma Center and Injury Prevention	624	213	5,704	5,310
Prescription Assistance Program	4,160	0	132,430	1,173
Rural and Urban Cancer Networks	36	7	12,356	132
Skin Cancer Due to Sun Exposure	1,398	0	19,144	7,312
Stroke Outreach	440	23	22,370	18,704
<b>Behavioral Health</b>				
ADHD Program	2,416	0	35,655	53
Al-Anon	78	0	3,852	520
ASD (Autism Spectrum Disorder)	24	0	0	7
Attorney General's Task-Force Substance Abuse	4	0	673	45
Center for the Protection of Children	95	0	12,811	1,114
Drug Take Back Day	353	60	20,042	2,500
Drugs 101: What Kids and Parents Need to Know	50	32	2,248	636
Opioid Task Force and Stewardship Program	243	0	18,898	325
<b>Healthy Lifestyles</b>				
Band Together	15,912	37,366	0	111,436
Bike Share Program	35	1,650	229,025	6,549
Carbon Monoxide Testing in the Community	68	0	4,587	1,450
Cocoa Pack Program	43	0	2,123	650
Community Garden	500	600	23,367	500
Farmers Market / Food as Medicine	111	207	5,293	5,886
Food Pantry Health Education / Children's Summer Program	288	1,316	10,481	3,455
HealthSLAM	0	66	0	510
School Health Assessments	1,132	3,065	93,639	13,545
Tobacco Intervention Program Support Group	60	0	7,935	113
Walk Friendly Community Assessment	3	30	0	1
Walking Opportunities	0	294	0	1000
<b>Totals:</b>	<b>43,342</b>	<b>47,339</b>	<b>\$ 1,380,845</b>	<b>204,289</b>